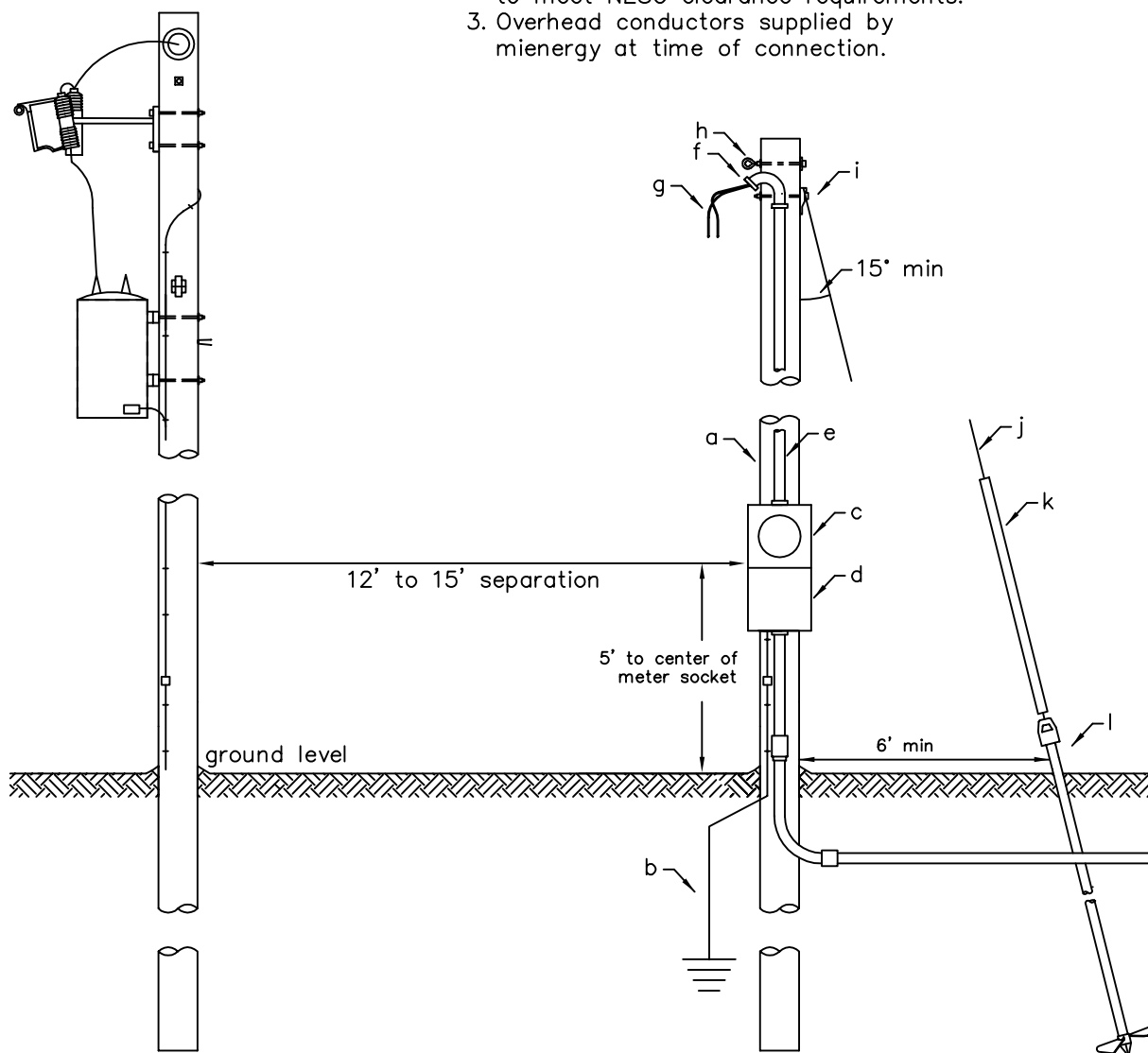


NOTES:

1. Member must consult mienergy before such an installation is planned or started.
2. Configuration must enable overhead conductors to meet NESC clearance requirements.
3. Overhead conductors supplied by mienergy at time of connection.



ITEM To be supplied and installed by contractor/homeowner:

a	30 class 6 utility pole minimum
b	Grounding in accordance with NEC requirements
c	Applicable amp rated lever bypass meter socket
d	Applicable amp rated service disconnect
e	Rigid Conduit
f	Rain tight weatherhead
g	Service entrance wire with 36" leads
h	Service deadend hardware
i	Guy attachment hardware
j	Guy wire, galvanized stranded steel 1/4" minimum
k	Guy guard
l	Guy anchor 6,000 lb rating minimum



STANDARD FOR POLE MOUNTED SERVICE
240V MAXIMUM
100AMP, 200AMP OR 320AMP

JAN 2020

BY: JDG

OHS-1