

MiNews

Family fun in October

RSVP for Pinter's Pumpkin Patch activities by Oct. 21



**Board
approves
refund of
\$2 million**

**WHICH HEAT
PUMP IS RIGHT
FOR MY HOME?**

It's back! I ♥ MiCo-op basket giveaway!



Co-op partnership helps bring new member outage notification tool

MiEnergy Cooperative has long been a proponent of partnerships in the operation of our electric cooperative. "Cooperation among Cooperatives" is not only one of the founding seven Cooperative Principles, but it has a proven track record of success for us. Here are just a few:

MiBroadband. This is our partnership with Spring Grove Communications and Mabel Cooperative Telephone Company that delivers broadband across our electric cooperative's service territory.

Heartland Security. Fourteen electric cooperatives in Iowa and Minnesota partnered to deliver residential and commercial security monitoring and video surveillance to over 8,000 homes, farms and businesses.

Southern Minnesota Energy Cooperative. This cooperative was formed by 12 participating electric cooperatives in 2015 as a single entity to acquire Alliant Energy's electric distribution service territory.

MINNOWA. This is a shared services partnership with Heartland Power Cooperative and Allamakee-Clayton Electric Cooperative for the management of our safety, compliance and vegetation management programs.

Minnesota Three. We partnered with neighboring electric cooperatives, Peoples Energy Cooperative and Freeborn-Mower Electric Cooperative, to own and operate a 518-kilowatt solar project in Oronoco, Minn. (located along Highway 52), which sells renewable energy to Dairyland Power Cooperative.

STAR Energy Services. This partnership provides engineering services and technology solutions for the operation of our electric cooperative. It was formed by a handful of electric cooperatives almost 20 years ago to provide electrical engineering and operational support for

specialized rural distribution utilities.

STAR is the company that designed and built our cooperative's outage management system called PYXIS. This system integrates with our advanced metering infrastructure and our geographical information system mapping to identify system outages and predict potential outages on our electric distribution system. PYXIS accurately displays outages and allows our crews, utilizing iPads, to respond to the location of the outage. Our dispatchers use this system during large storms to analyze equipment damages and track outage restoration.

Earlier this year, MiEnergy implemented STAR's member outage notification system. It allows MiEnergy members to sign up to receive a text message when there is a possible service interruption to their account. Members can enroll in this free service by visiting www.mienergy.coop/outages and clicking on the Power Notification Sign Up button. You'll need to have your account number handy.

Once the co-op is made aware of a possible power outage, it takes approximately 30 seconds for a text message to be sent to the member's mobile phone for notification. You will receive another text message that electricity has been restored once it has been verified the account is online.

There may be situations where you could receive several notifications, such as during a storm when power is intermittent. This is normal.

It is important for members to continue to report power outages to MiEnergy because this is not an auto outage reporting system. Members should call 800-432-2285 or use the SmartHub app to report power outages.

Another helpful tool for members during power outages is the web-based outage map found at www.mienergy.coop/outages. This is something we've had for several years, so check it out if you haven't done so before. Members can view a real-time system outage map from their mobile device that highlights outages by township. We are excited to share our cooperative's outage management technology with our membership with the rollout of the power outage notification system.

As always, I welcome your calls and emails.

Which heat pump option is right for my home?

You may have heard heat pumps can be a good alternative for heating your home.

The technology has improved a lot over the past 10-20 years and new ones can be at least 20% more efficient than previous ones. Heat pumps can also cool your home during summer months, which is an added value.

Newer models of heat pumps can operate effectively in sub-zero weather, but sometimes they do so by switching to electric resistance mode, which is much less efficient. In a colder climate, it may be worth investing in a dual fuel system where propane or another fuel provides supplemental heat on extremely cold days.

There are three different types of heat pump systems. Here are a few situations where you might use the different types.

DUCTED HEAT PUMP

If your home has a forced air furnace, a centralized air-source heat pump can work well. A compressor outside your home that looks like an A/C unit is connected to your home's existing duct system. Like your furnace, the temperature is controlled through one

main thermostat.

Heat pumps vary in efficiency, and this is measured in two ways. The Heating Seasonal Performance Factor (HSPF) rating measures heating efficiency and the Seasonal Energy Efficiency Ratio (SEER) rating measures cooling efficiency. The minimum ratings for a new heat pump are HSPF 8.2 and SEER 14. Heat pumps with the ENERGY STAR®-rating are significantly more efficient than the minimum standard. The quality of the installation also matters, and some contractors will have more experience and training than others.



©Peter Stevens

MINI-SPLIT HEAT PUMP

If your home does not have ductwork or the ductwork is poorly designed or leaky, a ductless mini-split heat pump might be your best bet. With a mini-split heat pump, tubes connected to the outside compressor carry refrigerant to one or more air handlers, which are

mounted high on a wall to distribute air. Thermostats regulate each air handler, providing control of different zones in the home.

In climates that don't experience extreme cold, a ductless heat pump could supply all the heating and cooling in a small home. They are often used in combination with a central heating and cooling system.

Ductless mini-splits are an excellent option if you don't have central air ducts, your ducts are leaking or you only want the new ductless heat pump to heat or cool part of the home.



©Marcela Gara

GEOHERMAL (OR GROUND-SOURCE) HEAT PUMP

Several feet underground, the temperature remains constant year-round, typically between 45 degrees and 75 degrees F, depending on latitude. Heat is transferred into or out of the ground by pipes buried in a loop 10 feet underground or drilled up to 400 feet into the earth.

The pipes carry water to a compressor, which uses a refrigerant to transfer the heat to or from your home's ducts.

A geothermal heat pump system is extremely energy efficient since the earth's temperature is warmer than the outside air in the winter and cooler than the outside air in the summer. This efficiency does come with a higher price tag, which is the initial cost to install the pipe loop or drill the hole for a vertical pipe.



©Dave Pape

Pat Keegan and Brad Thiessen of Collaborative Efficiency write on energy efficiency topics for the National Rural Electric Cooperative Association, the national trade association representing more than 900 local electric cooperatives.

Board room highlights | September 30, 2021

- CFO Hove provided a favorable financial report for August.
- Operation Round Up Trustee Larry Hafner's term is up in January and a new trustee will need to be appointed.
- Received a quarterly update from the Safety and Compliance Coordinator.
- CEO Krambeer provided updates on the cooperative's subsidiary businesses.
- Reviewed the timelines for the 2022 annual meeting.

The next board meeting will be held at the Cresco office on October 28 at 9 a.m.

We don't wish to alarm you...but we will.

Our smart security systems protect your loved ones and home from fire, carbon monoxide, intruders, and other threats.

888.264.6380 | heartlandss.com

Heartland Security
RESIDENTIAL • COMMERCIAL
AGRICULTURAL • MEDICAL

mienergy
COOPERATIVE

Your Touchstone Energy® Cooperative

NATIONAL CO-OP MONTH

It pays to be a member of MiEnergy Cooperative

Board approves refund of \$2 million on October bill

Capital credits are your share of the cooperative's "profits." Per MiEnergy's bylaws, the board of directors determines the amount of retirement each year based on the financial condition of the cooperative.

The board recently approved retiring just over \$2 million in capital credits. If you purchased electricity from the co-op during 1994 and/or 1998-2020, your credit is listed as a "Capital Credit Refund" on your electric bill statement. The 1994 credits are a retirement from Dairyland Power Cooperative that we are passing on to members. To receive a credit on your statement, the amount must be a minimum of \$5. Amounts below \$5 will be carried over to the next retirement.

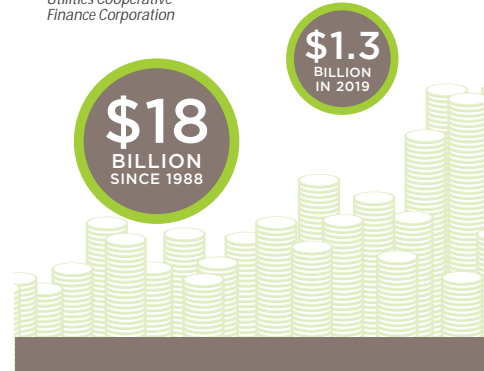
Capital credits at not-for-profit companies are similar to dividends paid by for-profit companies. The difference is the cooperative's "shareholders" are the people it serves and the dividends (capital credits) are paid only to those members.

For more information about capital credits, visit our website www.MiEnergy.coop.

Did You Know?

Electric cooperatives have retired \$18 billion to members since 1988 - \$1.3 billion in 2019 alone. Because electric co-ops operate at cost, any excess revenues (called margins) are allocated and retired to members in the form of capital credits.

Source: National Rural Utilities Cooperative Finance Corporation



I ♥ MiCo-op Gift Basket Drawing

Details of October's Co-op Month Giveaway

Enter today for a chance to win a basket full of locally-produced goods to be given away.

To show our appreciation for our members, MiEnergy Cooperative is pleased to announce a gift basket drawing in honor of National Cooperative Month. MiEnergy will draw names to give away 50 gift baskets filled with local items to members that enter the contest. And better yet, the co-op will come to you! A representative from MiEnergy will drop off the baskets to each winning member.

HOW TO ENTER: Visit <https://www.mienergy.coop/co-op-basket-giveaway> and complete the form or call 800-432-2285. Members must provide their name, phone number, account number and service address to enter. The contest closes October 28.

CONTEST RULES: One entry per membership. Employees and directors are not eligible to enter the contest.

DETAILS: Winning members will be notified by phone on October 29. Baskets will be delivered Nov. 2-5. Members do not need to be home for the basket to be delivered.



CHOCOLATES | BBQ SEASONINGS | SOY CANDLE CARMEL SAUCE | POPCORN | APPLE SAUCE JUICE | GOAT MILK SOAP | MINI PUMPKINS/GOURDS



Members only FALL EVENT

OCTOBER 22 FROM 2-6 P.M.

Hours of entertainment with FREE access to Pinter's Pumpkin Patch activities! Rain or shine.

PINTER'S GARDENS & PUMPKINS

2475 State Highway 9
Decorah, Iowa

Wagon rides
Jumping pillow
Corn maze
Big slides
Pedal go karts
Junior pedal go karts
Wiggleville
Hook and ring
Life-size chess
Sand tire hill

Tire maze
Duck races
Corn box
Farm animals/goat walk
Tetherball
Pumpkin bowling
Ball zone
Grain cart rides
Photo opps
And more!

Your Touchstone Energy® Cooperative

RSVP online at www.MiEnergy.coop or call 800-432-2285 by 4 p.m. Oct. 21!

Have your MiEnergy account number handy. It is required for reserving tickets.

Didn't RSVP in time? Complete this info & bring it to the event for first-come, first serve on remaining tickets. **Your MiEnergy account number is required.**

Name: _____ Phone: _____

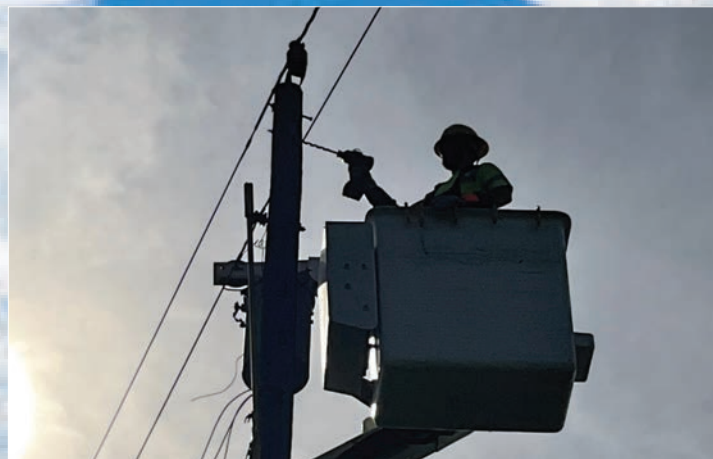
Address: _____ # Tickets: _____

Account #: _____ No ticket required for kids age 3 and under.

Working on MiLines

DAY | NIGHT | RAIN | SHINE

MiEnergy crews work daily to improve system reliability. Lineworker Josh Carolan changes out the transformer and adds animal and lightning protection at a service near Burr Oak, Iowa.



out & about in your COMMUNITY

INSPIRE EDUCATION DAY – PROTIVIN, IOWA

Inspire Education Day presented by the Norman Borlaug Heritage Foundation was held on September 17 at the Borlaug farm sites near Protivin. At right, Zach Steinmetz (l) and Kyle Quam (r) from MiEnergy presented electrical safety tips to the students, teaching them how to be safe around power lines.



CONSERVATION TOUR – SPRING VALLEY, MINN.

The 6th Grade Conservation Tour, organized by the Fillmore County Soil and Water Conservation District at Forestville State Park, was held on September 21. At left, MiEnergy's Darrin Peterson (l) and Mark Dornink (r) presented safety demonstrations to approximately 120 students. The students also saw presentations about recycling, invasive species, snakes, the historical society and fisheries.

ENVIRONMENTAL EDUCATION DAY – CALEDONIA, MINN.

The 6th Grade Environmental Education Day, organized by the Root River Soil and Water Conservation District at Winnebago Springs, was held on September 21. At right, MiEnergy's Randall Ashbacher (l) and Greg Becker (r) attended Houston County's event and presented to over 200 6th graders from area schools. There were also presentations on soil, rattlesnakes, aquatic invasive species, ATV safety, wildlife, forestry and electro-shocking streams.



CAREER AND TECHNICAL EDUCATION EXPLORATION DAY – CALEDONIA, MINN.

MiEnergy's Cole Kingsley (l) and Tyler Eide (r) participated in a career event organized by the Bluff Country Collaborative and hosted by Caledonia Schools. Over 600 students in grades 9 through 12 attended from Caledonia, Houston, La Crescent-Hokah, Lewiston-Altura, Mabel-Canton and Spring Grove schools. It served as a great way to help educate students on what MiEnergy does and to highlight the career of lineworkers.



Your Touchstone Energy® Cooperative

OFFICE INFORMATION

Open Monday-Friday 7:30 a.m. - 4 p.m.
IOWA 24049 Highway 9, PO Box 90, Cresco, IA 52136
MINNESOTA 31110 Cooperative Way, PO Box 626, Rushford, MN 55971

This institution is an equal opportunity provider and employer.

PHONE NUMBERS

LOCAL 563-547-3801 (Cresco); 507-864-7783 (Rushford)
TOLL-FREE & 24/7 OUTAGE REPORTING 800-432-2288
PAYMENT LINE 24/7 877-853-6517
UNDERGROUND CABLE LOCATING 811

ONLINE

WEBSITE www.MiEnergy.coop
SOCIAL MEDIA Facebook, Twitter, YouTube, and Instagram

BOARD OF DIRECTORS

DISTRICT 1 Dennis Ptacek, secretary and Jeff Redalen
DISTRICT 2 Dean Nierling, chair and Ron Stevens, vice chair
DISTRICT 3 Don Petersen, treasurer, Skip Wieser and Dennis Young
DISTRICT 4 Dean Fisher, Charles Frana and Carl Reicks
DISTRICT 5 Beth Olson and Jenny Scharmer

MANAGEMENT STAFF

BRIAN KRAMBEER president/chief executive officer
SHELLY HOVE chief financial officer
STEVE OIAN vice president of operations - Minnesota
VASSIL VUTOV vice president of information technology
MIKE WALTON vice president of operations - Iowa
KENT WHITCOMB vice president of member services

MINEWS STAFF

MEAGAN MOELLERS communications specialist, editor
ANNIE HOILAND communications specialist
BRENDA TESCH marketing and communications manager

2021 OFFICES CLOSED

NOV 25 Thanksgiving Day
NOV 26 Day after Thanksgiving
DEC 9 Employee Development Day
DEC 24 Christmas Eve Day
DEC 27 Christmas Day (observed)
DEC 31 New Year's Eve close at 11:30 a.m.

TAKE CONTROL

SMART MANAGEMENT. SMART LIFE. SMARTHUB.

SmartHub is a web and mobile app that allows you to do business with us like never before



www.smarthubapp.com

- Report service issues
 - Receive important notices
 - Manage your account
 - View and pay your bill
 - Monitor use 24/7
- ...all in the palm of your hand.

MiRecipes Family Favorites

Submit your family's favorite recipe for consideration to be printed in the January 2022 newsletter. Deadline is December 10. Send to Meagan at PO Box 90, Cresco, IA 52136 or email: mmeollers@MiEnergy.coop.

MiRecipes will be printed quarterly in this publication. If we publish your recipe, you will receive a \$5 credit on your next electric bill. Limit one recipe published per member annually.

SLOW COOKER APPLE CRANBERRY SAUCE | SARA LAQUA, LEWISTON

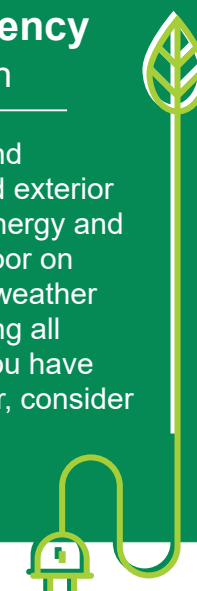
4 medium apples (peeled & chopped)
1 (12 oz. bag) fresh cranberries (about 3 c.)
½ c. brown sugar (packed)
1 t. grated orange peel
¼ c. orange juice

Spray 3-quart slow cooker with cooking spray. In slow cooker mix all ingredients. Cover; cook on HIGH heat setting for 5 hours (or on LOW heat for 8 hours). Leave sauce chunky if desired or stir well to break down apples and cranberries more. Makes a delicious sauce for turkey.

Energy Efficiency Tip of the Month

Old, uninsulated and improperly installed exterior doors can waste energy and money. Shut the door on wasted energy by weather stripping and sealing all exterior doors. If you have an old exterior door, consider replacing it with a newer, energy efficient model.

Source: www.energy.gov



Interruptible heat test Nov. 17

If you participate in MiEnergy's interruptible heating (also known as dual fuel or energy management), your system will be tested on Wednesday, Nov. 17 beginning at 5 p.m.

At that time, the electricity powering your electric heating system will be interrupted and cause your backup heating system to operate. All power will be restored by 11 p.m.

This annual test is conducted to ensure that your backup heating system is working and will adequately keep your home at a comfortable temperature during control periods this winter. The test also ensures the control equipment is functioning properly.

mienergy[™]
COOPERATIVE

Your Touchstone Energy[®] Cooperative

IOWA PO Box 90, Cresco, IA 52136

MINNESOTA PO Box 626, Rushford, MN 55971

PRSR STD
U.S. Postage

PAID
DPC

BATMOBILE? BUCKET TRUCK.



We're not your typical energy company, we're a local, not-for-profit electric cooperative. That's because we don't have customers, we have members. Putting people first is our super power.

To learn more about the cooperative difference, visit TouchstoneEnergy.com

YOUR SOURCE OF POWER. AND INFORMATION.



mienergy[™]
COOPERATIVE
Your Touchstone Energy[®] Cooperative

HARVEST SAFETY TIPS FOR FARMWORKERS



- **Maintain a 10-foot clearance** around all utility equipment in all directions.
- **Use a spotter and deploy flags** to maintain safe distances from power lines and other equipment when doing field work. Don't let the spotter touch the machinery while it is being moved anywhere near power lines.
- **Use care when raising augers or the bed of grain trucks** near power lines.
- **If your equipment makes contact with an energized or downed power line, contact us immediately** by phone and remain inside the vehicle until the power line is de-energized. In case of smoke or fire, exit the cab by making a solid jump out of the cab, without touching it at the same time, and hop away to safety.
- **Consider equipment and cargo extensions of your vehicle.** Lumber, hay, tree limbs, irrigation pipe and even bulk materials can conduct electricity, so keep them out of contact with electrical equipment.
- **Never attempt to raise or move a power line** to clear a path.

mienergy[™]
COOPERATIVE
Your Touchstone Energy[®] Cooperative
Source: Safe Electricity